



# Wind-solar complementarity for major communication base stations in Tunisia



✓ IP65/IP55 OUTDOOR CABINET

✓ OUTDOOR MODULE CABINET

✓ OUTDOOR ENERGY STORAGE CABINET

✓ 19 INCH





## Overview

---

Mar 1, 2025 · In this paper, a wind-solar energy complementarity coefficient is constructed based on the Copula function, which realizes the accurate and efficient characterization of the. Wind energy forms an important component of the Tunisian renewable energy program and targets (Ministère de l'Energie, des Mines et des Energies Renouvelables de Tunisie, 2020). (1) Large-scale projects, subject to concession (tender process): covering projects over 10 MW for solar and over 30 MW. In its contribution towards fighting climate change, Tunisia aims at reducing greenhouse gas emissions across all sectors through reducing carbon intensity in the country by 41 per cent in 2030, relative to t. Wind-solar complementary power system, is a set of power generation application system, the. Jun 1, 2020 · The spread use of both solar and wind energy could engender a complementarity behavior reducing their inherent and variable characteristics what would improve predictability Jan 15, 2024 · Further, based on the model group for quantifying contributions and the compensation electricity. Headquartered in Shanghai with 50,000m<sup>2</sup>+ production bases across Jiangsu, Zhejiang, and Guangzhou, the company employs 1,000+ professionals, including 20+ engineers driving energy storage technology. Mar 1, 2025 · In this paper, a.



## Wind-solar complementarity for major communication base stations i



### [Communication base station wind and solar complementary ...](#)

Mar 28, 2022 · This article aims to reduce the electricity cost of 5G base stations, and optimizes the energy storage of 5G base stations connected to wind turbines and photovoltaics.

### [Weekly communication base station wind and solar complementarity](#)

This paper describes the design of an off-grid wind-solar complementary power generation system of a 1500m high mountain weather station in Yunhe County, Lishui City.



### [Review of mapping analysis and complementarity between solar and ...](#)

A case study was established to illustrate the methodology of mapping the solar and wind potential and their complementarity.

### [Tunisia Communication Base Wind Power Construction Plan](#)

UPC Renewables (UPC) and the Climate Fund Managers (CFM) have partnered to develop a 30 megawatt wind farm in Sidi Mansour, Tunisia that will help the country meet its 30% renewable



114KWh ESS



### Where is the address of the wind and solar complementary solar

This large-capacity, modular outdoor base station seamlessly integrates photovoltaic, wind power, and energy storage to provide a stable DC48V power supply and optical distribution.

### Tunisia communication base station wind power equipment ...

The wind-solar-diesel hybrid power supply system of the communication base station is composed of a wind turbine, a solar cell module, an integrated controller for hybrid energy



### Yamoussoukro Communication Base Station Wind and Solar ...

The LM-complementarity between wind and solar power is superior to that between wind or solar power generated in different regions. The hourly load demand can be effectively met by the LM ...

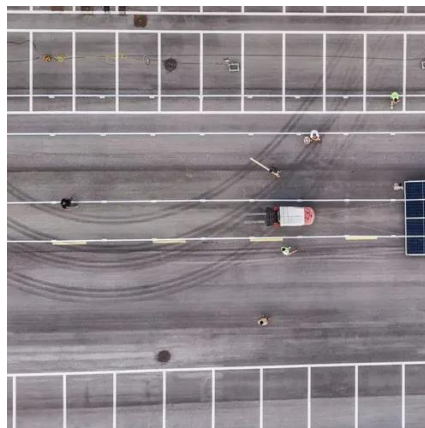


## Tunisia Communication Base Station



## Wind Power

We investigate the use of wind turbine-mounted base stations (WTBSs) as a cost-effective solution for regions with high wind energy potential, since it could replace or even outperform



### What are the functions of wind and solar complementary ...

In summary, solar power supply systems for communication base stations are playing an increasingly important role in the field of power communication with their unique advantages.

### The wind and solar complementarity of communication base stations

The wind-solar-diesel hybrid power supply system of the communication base station is composed of a wind turbine, a solar cell module, an integrated controller for hybrid energy





## Contact Us

---

For catalog requests, pricing, or partnerships, please visit:

<https://www.firmaskrzypek.pl>

Phone: +48 22 426 71 90

Email: [info@firmaskrzypek.pl](mailto:info@firmaskrzypek.pl)

Scan the QR code to access our WhatsApp.

