



Winter photovoltaic panel installation





Overview

In summary, installing solar panels in winter is not only feasible —it can be a strategic decision. This technology performs well in cold conditions, incentives remain available, and you'll be ready to maximise electricity generation as soon as the good weather arrives. You'll benefit from the most. 45-Degree Angle is Optimal for Snow Regions: Research shows that 45-degree panel installation provides the ideal balance between snow shedding and energy production, significantly outperforming flatter angles in snowy climates. Northern States Lead Solar Adoption: Cold-weather states like Illinois. Find a network of trusted installers for solar system, solar panels and electricity needs.



Winter photovoltaic panel installation



[The Complete Guide to Solar Power in Winter: Performance, ...](#)

Most of the drop in solar power happens because winter months bring shorter days and the sun sits lower in the sky. Here's a quick look at what you can expect: Solar panels produce about ...

[Do Solar Panels Work in Winter? What You Need to Know](#)

With winter comes colder temperatures, shorter days, and the belief that both factors negatively impact solar panel efficiency. This is a misconception. Even in the dreary winter months, ...



[Winter Solar Installation: Safety & Performance Guide For 2025](#)

Master winter solar installation: safety protocols & performance tips for installers in snow-prone regions.

[Install Solar Panels This Winter , Independent Power](#)

Since winter is the off-season for many solar companies, there is less backlog of projects. This means quicker approvals, faster installations, and less waiting time. By installing in winter, you can start ...



[Install Solar In Winter For Peak Spring, Summer Production](#)

Installing solar panels during the winter months might seem counterintuitive due to shorter days and reduced sunlight. However, this strategic choice can actually position homeowners to ...

[Do Solar Panels Work In Winter Snow? Complete 2025 Guide](#)

Solar panels work effectively in winter snow with only 1-5% production loss. Learn why cold weather improves efficiency, safety tips for snow removal, and real performance data.



[Snow on Solar Panels: What You Need To Do - Forbes ...](#)

Find a network of trusted installers for solar system, solar panels ...



[How to Winterize a Solar Power System:](#)



Essential Tips to Protect and

Learn how to prevent snow and ice buildup, protect batteries from freezing, adjust panel angles, and monitor performance to avoid costly damage and keep your solar investment thriving all winter long.

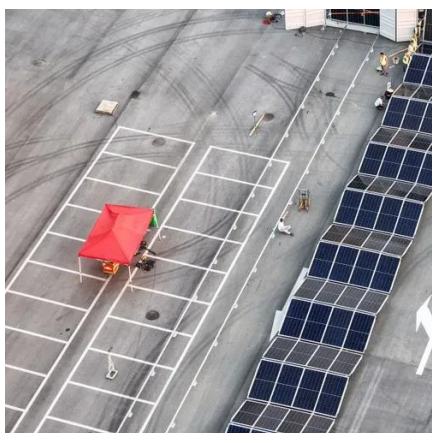


Snow on Solar Panels: What You Need To Do - Forbes Home

Find a network of trusted installers for solar system, solar panels and electricity needs. Find a solar panel installer today! Do Solar Panels Work in the Winter? Yes. Solar

Is it worth installing solar panels in winter? Real

Find out whether installing solar panels in winter is worthwhile. In this article, we'll explain how cold weather affects performance, how much you can save, and why this season can actually be ...



What is the best solar installation in winter? , NenPower

When choosing a solar installation, factors such as panel type, angle, and orientation become paramount to optimize energy capture. The first aspect to analyze is the type of solar panels ...



Contact Us

For catalog requests, pricing, or partnerships, please visit:

<https://www.firmaskrzypek.pl>

Phone: +48 22 426 71 90

Email: info@firmaskrzypek.pl

Scan the QR code to access our WhatsApp.

